

# RELA Weekly Notice

*Hoki mai!*

**20 October 2022**

***Welcome back***

## ***Things happening this long weekend***

**The Rotorua Bike Festival WHAKA 100, the largest MTB encounter in the Southern hemisphere, with many events on the bike tracks of Whakarewarewa Forest.**



**The Lake Tarawera Spring fair will be on Sunday from 10am to 2pm at Stoney point Reserve, at Lake Tarawera. Also, the Kuirau Park market is on every Saturday from 7am to 1pm,**

**Every Thursday night, the ROTORUA NIGHT MARKET will be on from 5pm to 9pm at Tutanekai St with International food and live music.**

**Labour day**

**Monday 24 October is a **Public Holiday**, the school will be closed.**

**Enjoy your long weekend, sunshine is also expected!!!**

**Next week we welcome**

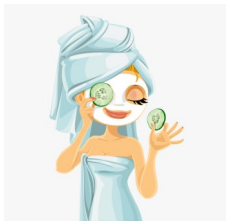
**From Tahiti**

**Andrea Senni**

***We're Back!***

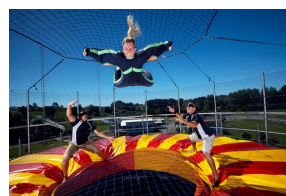
## ***RELA Activities***

**Friday 21 October**



**Polynesian Spa  
1—3pm**

**Friday 28 October**



**Velocity Valley  
1—3pm**

**Wednesday 26 October**

**Kuirau park Walk 15.15-16.45**

**FOLLOW US:**

**INSTAGRAM: @relarotoruanz**

**FACEBOOK: RELA Rotorua English Language**

